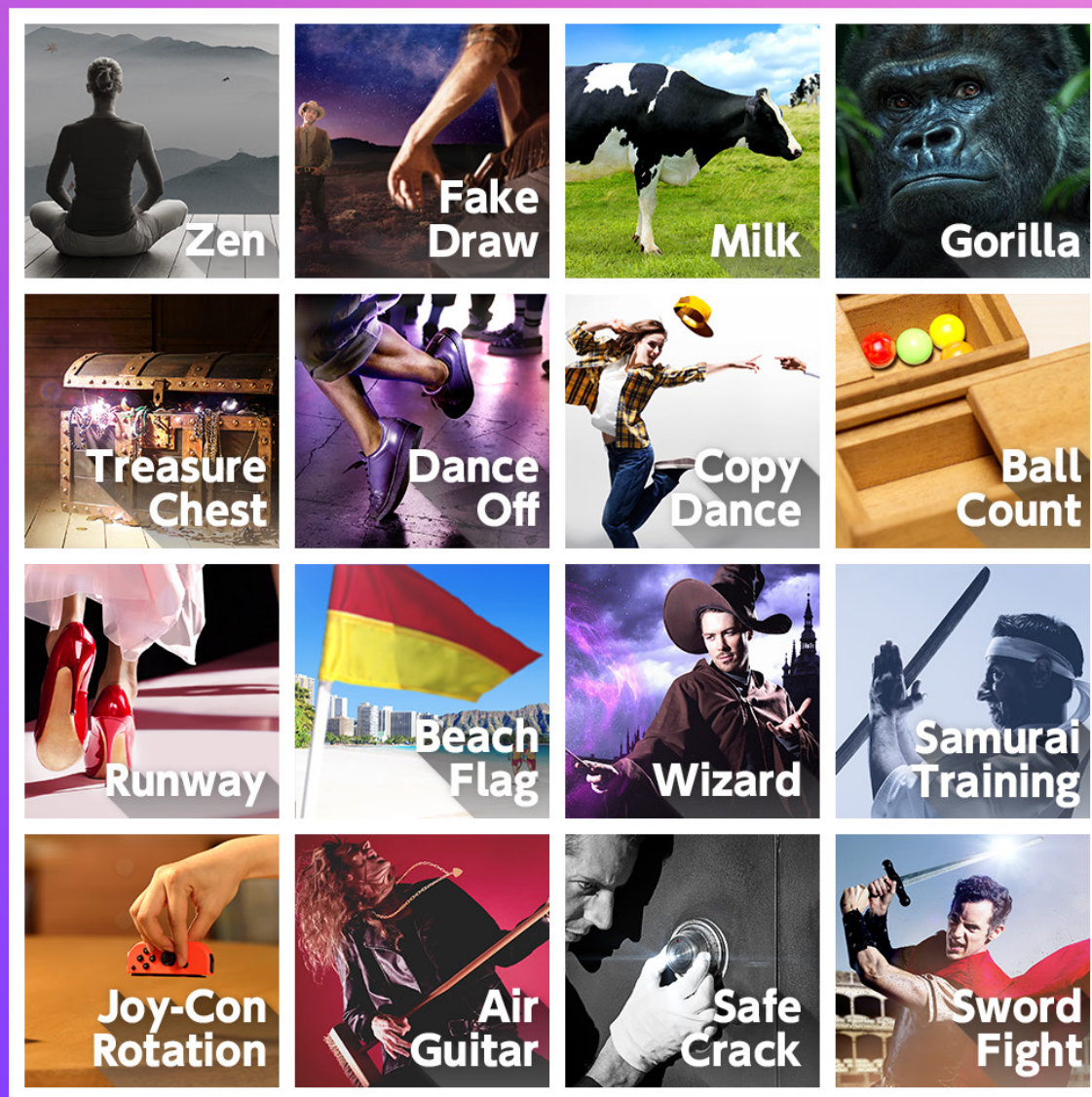




BINGO

TEAM BINGO

Both teams (red vs. blue) share one card. Play rock-paper-scissors to see who picks the first game. Teams put their color star on the game tile for each win, and the losing team picks the next game (no repeats). The first team to complete a row shouts “BINGO!”



© 2017 Nintendo. 1-2-Switch and Nintendo Switch are trademarks of Nintendo.

